




Single Pass Cold In Place Recycling

A vertical sidebar on the left side of the slide contains four red-outlined navigation icons: a house icon at the top, followed by a right-pointing arrow, a left-pointing arrow, and a circular refresh icon at the bottom.

Cold in Place Recycling is the process of recycling an asphalt pavement in place to a specified depth, adding emulsifiers thus creating a bituminous base course.

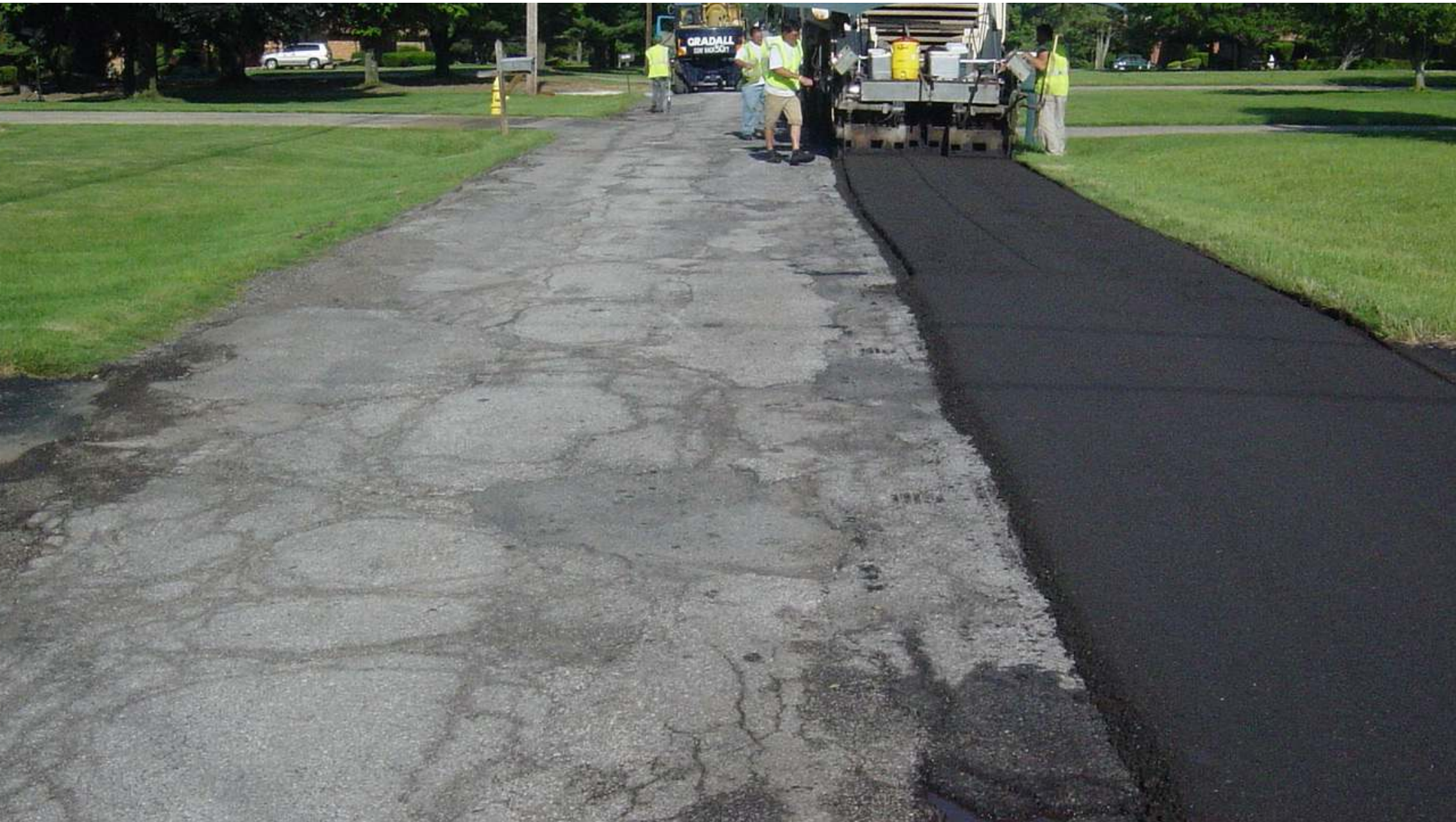


Candidate for Recycling — Recycling Would Create a Homogenous Base


Green Process



Cold In place Recycling



Why single pass recycle?

- Use of existing materials
- Green Process
- 1/3 the cost of Remove and Replace
- Upgrade of roadway base 
- No inconvenience to traveling public

Cost Comparison

- 6" Single Pass Asphalt Recycling \$10.00-\$12.00/SY
- 6" Remove and Replace \$35.00-\$50.00/SY
- 15-20 year pavement